



# Appellation St Helena Overview

# The History of St. Helena Winemaking

---

- St. Helena's first winemakers: Charles Krug & Henry Pellet-1860's
- Even then, St. Helena was considered the best place in the Valley to grow grapes
- St. Helena Viticultural Club-Founded 1875
- Over 100 members before 1880
- Winemaking interwoven with the community of St. Helena
- Formal Appellation created: 1995
- St. Helena Viticultural Club reborn as Appellation St. Helena in 2004



# St. Helena's Unique Topography

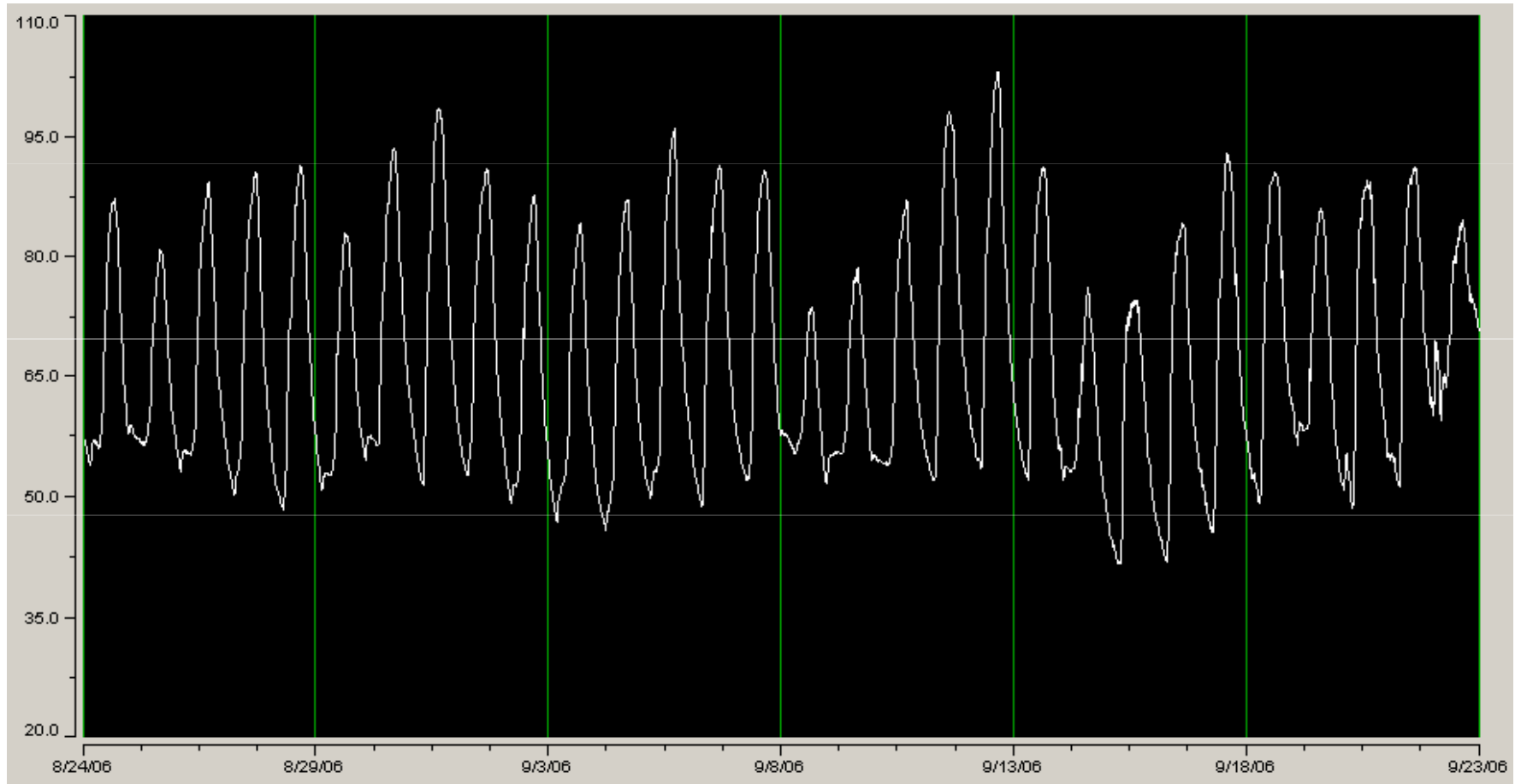
---

- St. Helena's Valley floor narrows to less than .5 miles across
- Giving it a larger hillside to valley floor ratio,
- Funneling Bay moisture,
- And producing wide diurnal temperature swings
- Which sets up the vines and fruit well each day to get the most out of our warm climate

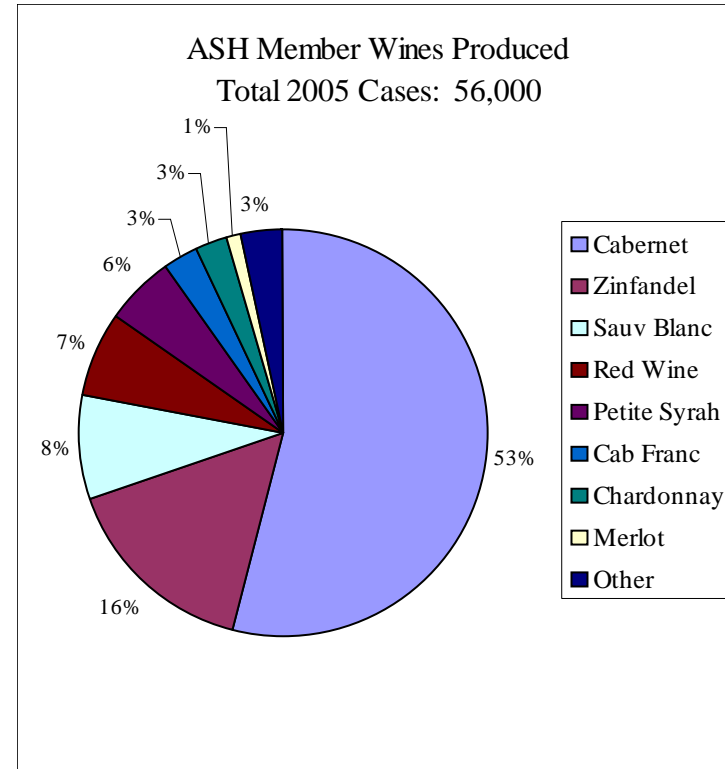
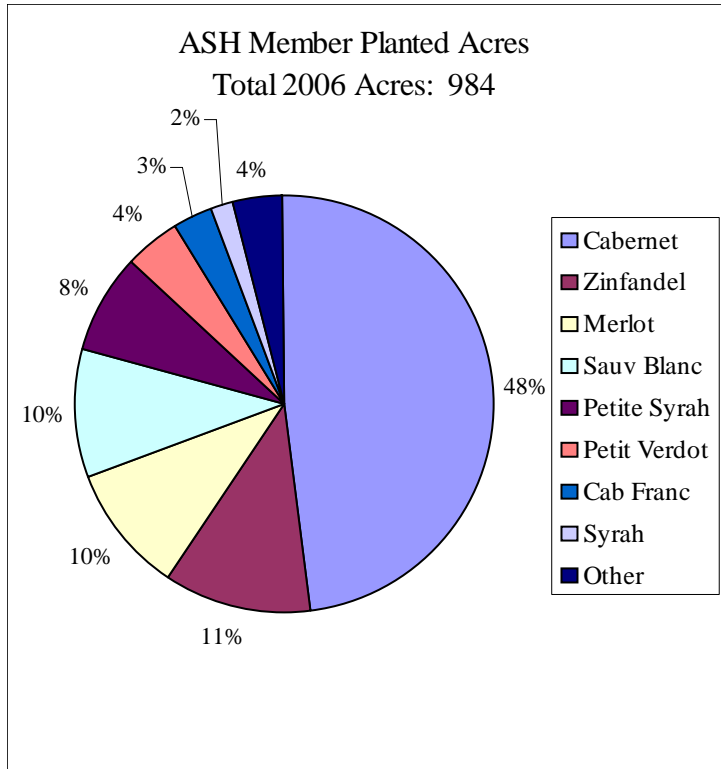


# St. Helena's Daily Temperature swings: 40°F

---

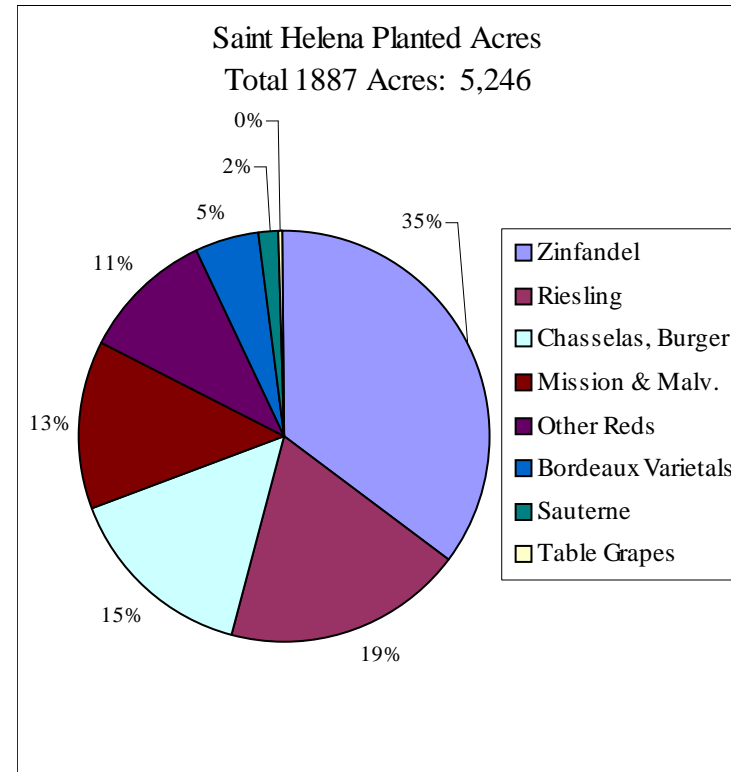
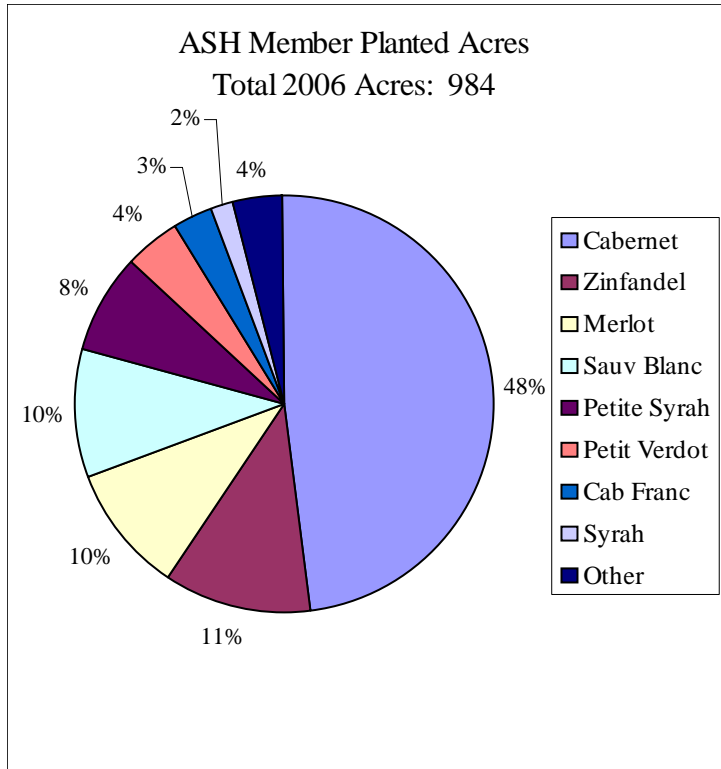


# This Microclimate is Great for Many Varietals



# But Varietals Have Changed Since 1887!

---



...and total planted acres decreased substantially as the town grew

---



# So How was the 2006 Harvest in St. Helena?

---

- Nearly 2x normal rainfall that ended early spring set up the vines well for the growing season without compromising flowering
- A 1-2 week longer growing season than normal pushed the end of harvest into early November (other appellations at higher elevations and/or cooler climates are later)
- Above average yields, but down 20-30% from last year (which was 50% above normal)
- No high heat spells after veraison reduced dehydration issues
- These mild, long growing conditions produced higher acidity and good color, structure and extraction without the super extraction and alcohol levels of hot years like 2002-2003.

